

# OTDR Report (1310 nm (9 μm))

## General Information

File name:	96_1310.trc	Customer:	ADNOC
Test date:	14-Feb-24	Company:	PAN ARABIA
Test time:	3:31 PM	Fiber ID:	96
Cable ID:	FAR0 to FAR3 1A (A-B)		
Job ID:	0500831		
Comments:	END TO END TEST		

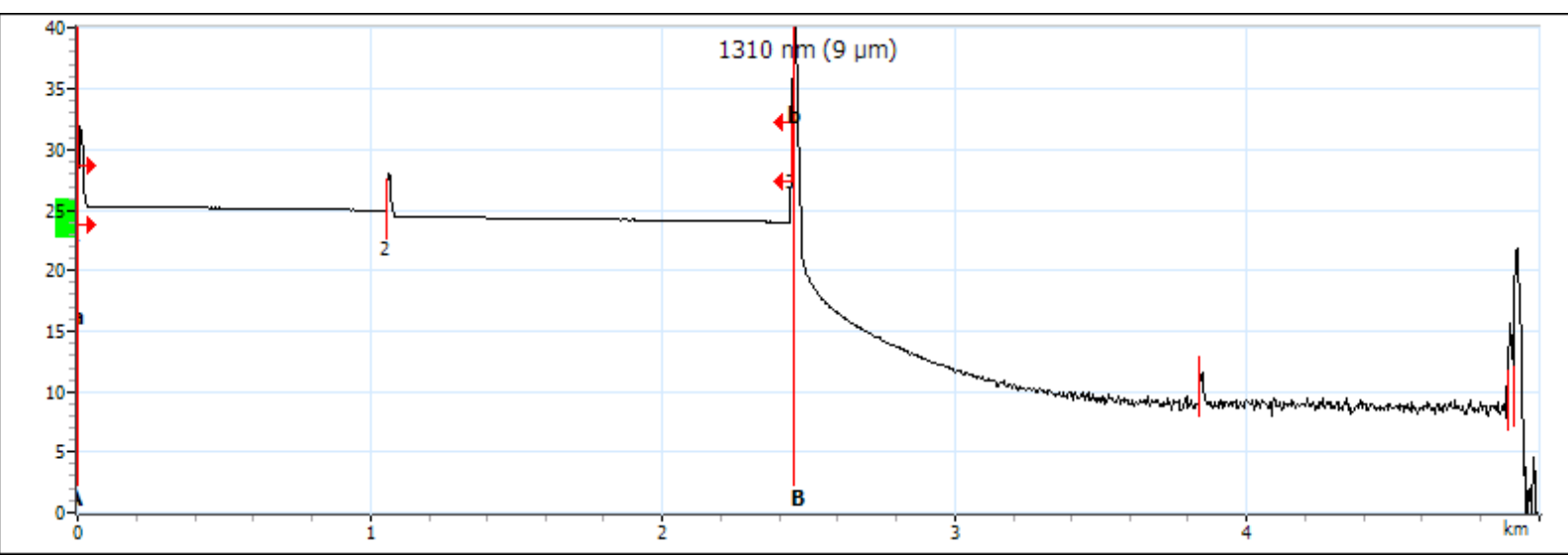
## Locations

	Location A	Location B
Location	FAR0	FAR3
Operator	PANDA	HABEEB
Model	MAX-720C-Q1-EA-EI	
Serial number	1206159	
Calibration date	29-Mar-23 (UTC)	

## Results

Span length:	2.4447 km	Average loss:	0.544 dB/km	Injection level:	25.3 dB
Span loss:	1.330 dB	Average splice loss:	---		
Span ORL:	36.96 dB	Maximum splice loss:	---		

## Graph



## Markers

Marker	Position (km)	Value (dB)	A-B LSA attenuation:	0.683 dB/km	A-B average loss:	-6.818 dB/km
a	0.0000	25.372	A-B LSA loss:	1.672 dB	4-point Event Loss:	-17.566 dB
A	0.0000	25.372	A-B ORL:	<31.11 dB	Maximum reflectance:	> -25.9 dB
B	2.4505	42.080				
b	2.4505	42.080				

# OTDR Report (1310 nm (9 μm))

## Event Table

Type	No.	Pos./Length (km)	Loss (dB)	Reflectance (dB)	Attenuation (dB/km)	Cumulative (dB)
First Connector	1	0.0000	---	-46.0		0.000
Section		1.0564	0.372		0.352	0.372
Reflective	2	1.0564	0.493	-53.9		0.865
Section		1.3883	0.465		0.335	1.330
Reflective	3	2.4447	---	> -22.8		1.330
Section		1.3947	---		---	---
Reflective		3.8395	---	-54.1		---
Section		1.0526	---		---	---
Merged Events		4.8920	---	-32.5		---

## Macrobend

Position (km)	Delta Loss (dB)

## Pass/Fail Thresholds

	1310 nm (9 μm)

## Test Parameters

	A → B
Wavelength (nm)	1310 nm (9 μm)
Range (km)	5.0000
Pulse (ns)	100
Duration (s)	5

## Test Settings

	A → B	Macrobend Wavelengths	Macrobend Delta Loss (dB)
IOR	1.467700		
Backscatter (dB)	-79.45		
Helix factor (%)	0.00		
Splice loss detection threshold (dB)	0.020		
Reflectance detection threshold (dB)	-72.0		
End-of-fiber detection threshold (dB)	5.000		

# OTDR Report (1550 nm (9 μm))

## General Information

File name:	96_1550.trc	Customer:	ADNOC
Test date:	14-Feb-24	Company:	PAN ARABIA
Test time:	3:31 PM	Fiber ID:	96
Cable ID:	FAR0 to FAR3 1A (A-B)		
Job ID:	0500831		
Comments:	END TO END TEST		

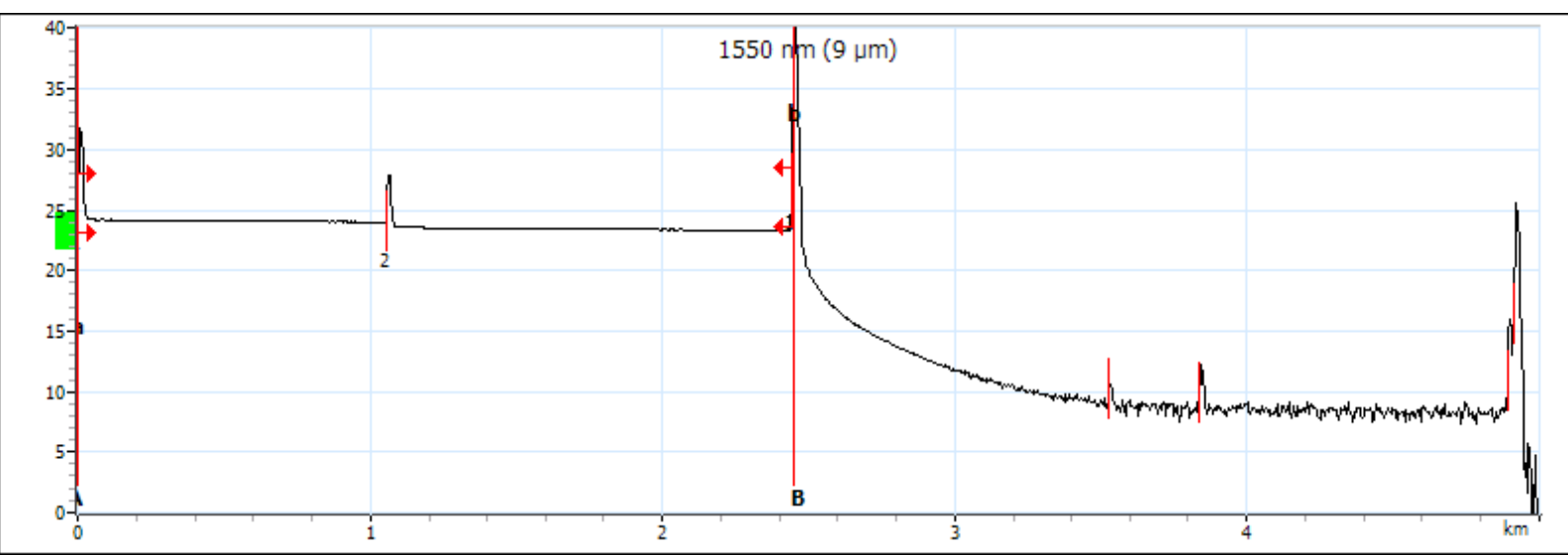
## Locations

	Location A	Location B
Location	FAR0	FAR3
Operator	PANDA	HABEEB
Model	MAX-720C-Q1-EA-EI	
Serial number	1206159	
Calibration date	29-Mar-23 (UTC)	

## Results

Span length:	2.4450 km	Average loss:	0.374 dB/km	Injection level:	24.2 dB
Span loss:	0.915 dB	Average splice loss:	---		
Span ORL:	38.94 dB	Maximum splice loss:	---		

## Graph



## Markers

Marker	Position (km)	Value (dB)	A-B LSA attenuation:	0.518 dB/km	A-B average loss:	-7.178 dB/km
a	0.0000	24.625	A-B LSA loss:	1.270 dB	4-point Event Loss:	-18.079 dB
A	0.0000	24.625	A-B ORL:	<31.47 dB	Maximum reflectance:	> -25.8 dB
B	2.4505	42.214				
b	2.4505	42.214				

# OTDR Report (1550 nm (9 μm))

## Event Table

Type	No.	Pos./Length (km)	Loss (dB)	Reflectance (dB)	Attenuation (dB/km)	Cumulative (dB)
First Connector	1	0.0000	---	-46.4		0.000
Section		1.0560	0.210		0.199	0.210
Reflective	2	1.0560	0.432	-54.2		0.642
Section		1.3890	0.273		0.197	0.915
Reflective	3	2.4450	---	> -23.6		0.915
Section		1.0847	---		---	---
Reflective		3.5296	---	-60.6		---
Section		0.3088	---		---	---
Echo		3.8385	---	-54.8		---
Section		1.0534	---		---	---
Merged Events		4.8919	---	-26.6		---

## Macroband

Position (km)	Delta Loss (dB)

## Pass/Fail Thresholds

	1550 nm (9 μm)

## Test Parameters

	A → B
Wavelength (nm)	1550 nm (9 μm)
Range (km)	5.0000
Pulse (ns)	100
Duration (s)	5

## Test Settings

	A → B	Macroband Wavelengths	Macroband Delta Loss (dB)
IOR	1.468325		
Backscatter (dB)	-81.87		
Helix factor (%)	0.00		
Splice loss detection threshold (dB)	0.020		
Reflectance detection threshold (dB)	-72.0		
End-of-fiber detection threshold (dB)	5.000		